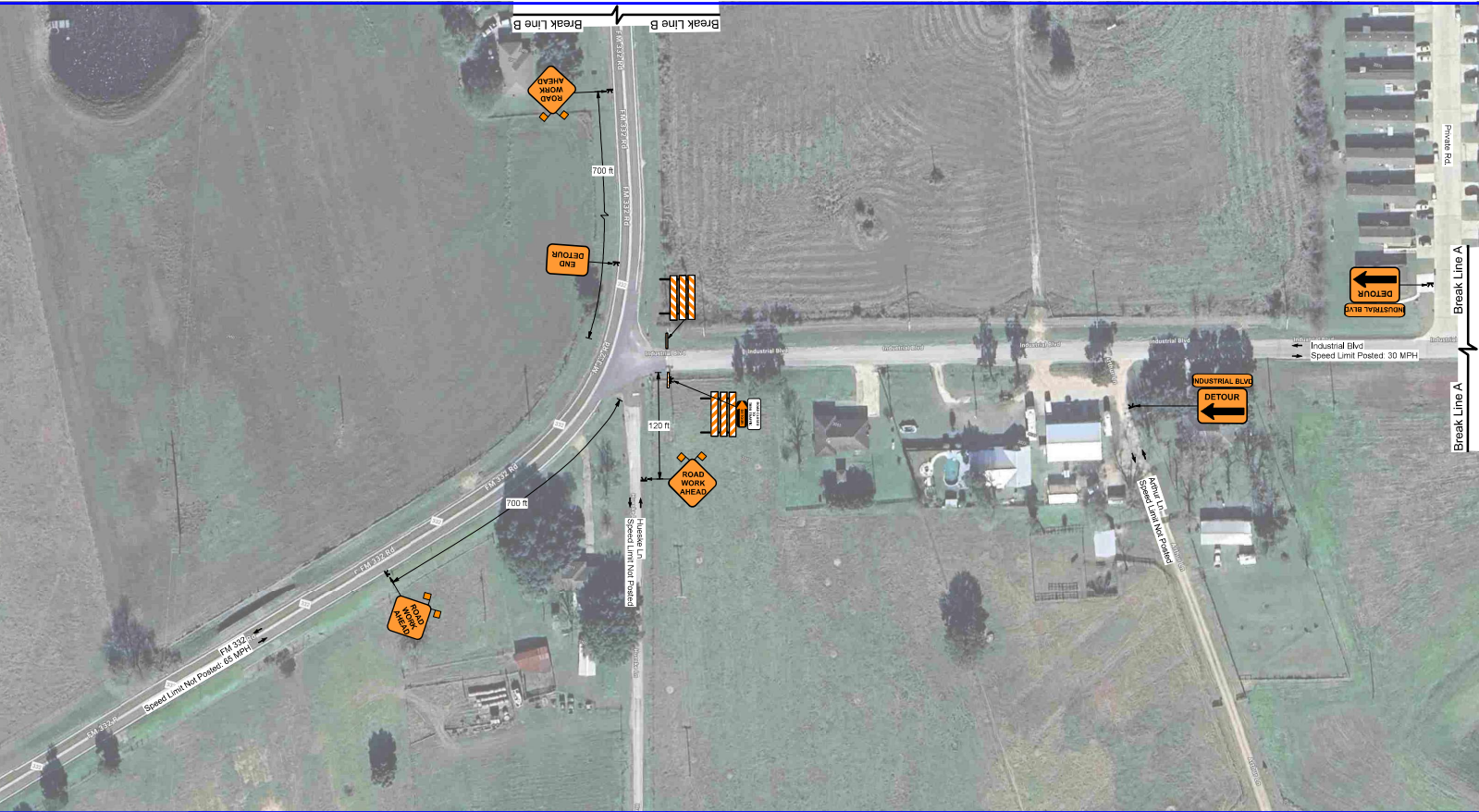


Project: RM Dudley - Industrial Blvd Lift Station Replacement - Brenham TX
Comments:
 All signs & devices shall be placed in accordance with the latest provisions of the Texas Department of Transportation (TxDOT)-Traffic Operations Division Standard Drawings with respect to any applicable provisions from the city of Brenham.
 Access to residential and commercial driveways to be maintained at all times.
 Parking ban shall be coordinated with the City of Brenham Police Department.

Date: 2/4/2025
Author: J. Pertee
TTCP: 18085
Notes:
 -Sign spacing may be adjusted to fit field conditions.
 -Buffer space may be eliminated or modified to fit field conditions.
 -Roads with no posted speed limit have been designed for 30 mph.
 -Road Work Ahead signs shall be placed on all cross streets intersecting within the advance signing. The signs should be placed a minimum of 100 feet in advance of the intersection.

Legend	
	Work Area
	Type III Barricade

PLANS ARE NOT TO SCALE
 Sheet 1 of 5



AWP
Safety

1(800)-343-2650
www.awpsafety.com

Project: RM Dudley - Industrial Blvd Lift Station Replacement - Brenham TX

Comments:
All signs & devices shall be placed in accordance with the latest provisions of the Texas Department of Transportation (TxDOT)-Traffic Operations Division Standard Drawings with respect to any applicable provisions from the city of Brenham.

Access to residential and commercial driveways to be maintained at all times.
Parking ban shall be coordinated with the City of Brenham Police Department.

Date: 2/4/2025
Author: J. Pertee
TTCP: 18085

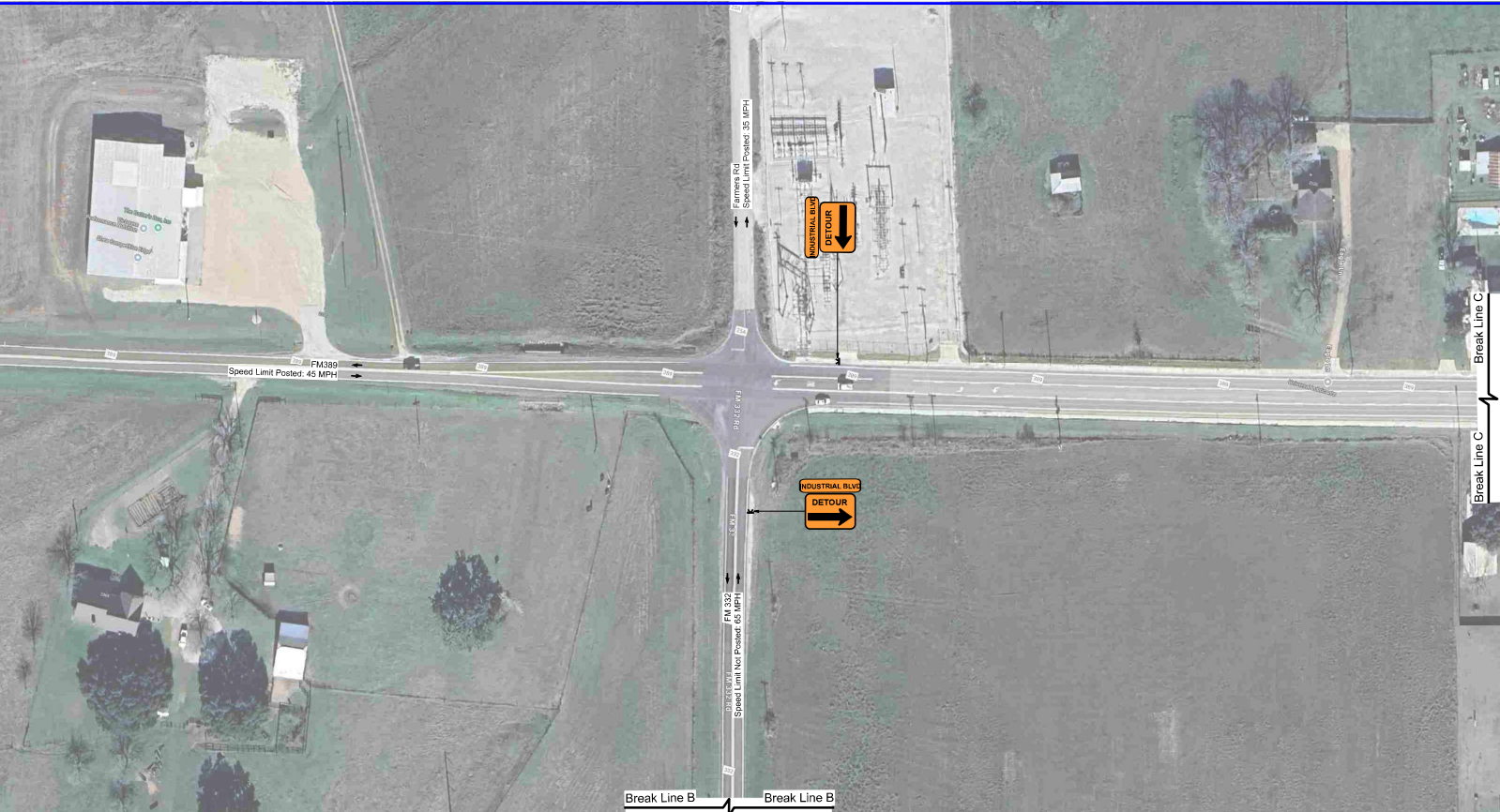
Notes:
-Sign spacing may be adjusted to fit field conditions.
-Buffer space may be eliminated or modified to fit field conditions.
-Roads with no posted speed limit have been designed for 30 mph.
-Road Work Ahead signs shall be placed on all cross streets intersecting within the advance signing. The signs should be placed a minimum of 100 feet in advance of the intersection.

Legend

- Portable Sign Stand
- Type III Barricade

PLANS ARE NOT TO SCALE

Sheet 3 of 5



Project: RM Dudley - Industrial Blvd Lift Station Replacement - Brenham TX
Comments:
 All signs & devices shall be placed in accordance with the latest provisions of the Texas Department of Transportation (TxDOT)-Traffic Operations Division Standard Drawings with respect to any applicable provisions from the city of Brenham.
 Access to residential and commercial driveways to be maintained at all times. Parking ban shall be coordinated with the City of Brenham Police Department.

Date: 2/4/2025
Author: J. Pertee
TTCP: 18085
Notes:
 -Sign spacing may be adjusted to fit field conditions.
 -Buffer space may be eliminated or modified to fit field conditions.
 -Roads with no posted speed limit have been designed for 30 mph.
 -Road Work Ahead signs shall be placed on all cross streets intersecting within the advance signing. The signs should be placed a minimum of 100 feet in advance of the intersection.

Legend	
	Portable Sign Stand



PLANS ARE NOT TO SCALE

 Sheet 4 of 5



Project: RM Dudley - Industrial Blvd Lift Station Replacement - Brenham TX
Comments:
 All signs & devices shall be placed in accordance with the latest provisions of the Texas Department of Transportation (TxDOT)-Traffic Operations Division Standard Drawings with respect to any applicable provisions from the city of Brenham.
 Access to residential and commercial driveways to be maintained at all times. Parking ban shall be coordinated with the City of Brenham Police Department.

Date: 2/4/2025
Author: J. Pertee
TTCP: 18085
Notes:
 -Sign spacing may be adjusted to fit field conditions.
 -Buffer space may be eliminated or modified to fit field conditions.
 -Roads with no posted speed limit have been designed for 30 mph.
 -Road Work Ahead signs shall be placed on all cross streets intersecting within the advance signing. The signs should be placed a minimum of 100 feet in advance of the intersection.

Legend	PLANS ARE NOT TO SCALE
 Portable Sign Stand	 Sheet 5 of 5