



NOTICE OF A SPECIAL MEETING

**Parks and Recreation Advisory Board
Wednesday, January 15, 2020 @ 11:30 a.m.
All Sports Building – Hohlt Park
137 Lounge Road Brenham, Texas 77833**

- 1. Call Meeting to Order**
- 2. Citizen and Visitor Comments**

WORK SESSION

- 3. Presentation and Discussion Related to the Future Brenham Family Park Design and Construction (Pages 1-5)**

REGULAR SESSION

- 4. Parks and Recreation Staff Updates**
 - a. Splash Pad for Henderson Park**
 - b. Participation in the Texas Parks and Wildlife Department (TPWD) Recreational Trails Grant Program for Improvements to the Nature Trail at Hohlt Park**
- 5. Adjourn**

CERTIFICATION

I certify that a copy of the January 15, 2020 agenda of items to be considered by the City of Brenham Parks and Recreation Advisory Board was posted to the City Hall bulletin board at 200 W. Vulcan, Brenham, Texas on Friday, January 10, 2020 at 3:30 p.m.

Crystal A. Locke, Staff Liaison

Crystal A. Locke, Staff Liaison
City of Brenham Parks and Recreation Advisory Board

<p>Disability Access Statement: This meeting is wheelchair accessible. The accessible entrance is located at the Vulcan Street entrance to the City Administration Building. Accessible parking spaces are located adjoining the entrance. Auxiliary aids and services are available upon request (interpreters for the deaf must be requested twenty-four (24) hours before the meeting) by calling (979) 337-7567 for assistance.</p>
--

I certify that the attached notice and agenda of items to be considered by the City of Brenham Parks and Recreation Advisory Board was removed by me from the City Hall bulletin board on the _____ day of _____, 2020 at _____ a.m./p.m.

Signature

Title



To: Parks and Recreation Advisory Board

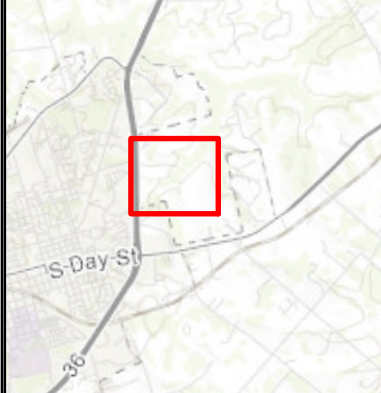
From: Dane Rau, Director of Public Works

Subject: Future Brenham Family Park Design and Construction

Date: January 8, 2020

Over the last 2 yrs. and since the creation of the preliminary Brenham Family Park layout there have been some changes mainly related to the recreation pond/detention pond placement. Staff informed the Board at the November 13 meeting that the vision of having one on-channel lake/detention pond was denied by the Corps of Engineers. With the intentions of still partnering with the Kruse Family on detention from adjoining private property staff asked Jones-Carter for additional rendering that will accomplish both. Two new options were submitted that included multiple water structures ranging from .5 acres to 7 acres. These two renderings are only options and considerations if the intent is still to partner with the Kruse Family to have multiple uses for recreational lakes/detention ponds on park property. Having multiple water structures on the park property will change the initial layout of the Brenham Family Park presented to the Board in 2018.

Staff is wanting to talk through the options we have before us along with the overall intent of the Brenham Family Park as it relates to usage and amenities. Included are several renderings staff will explain in the presentation.

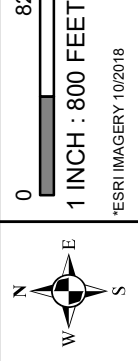


VICINITY MAP
1 INCH = 2 MILES

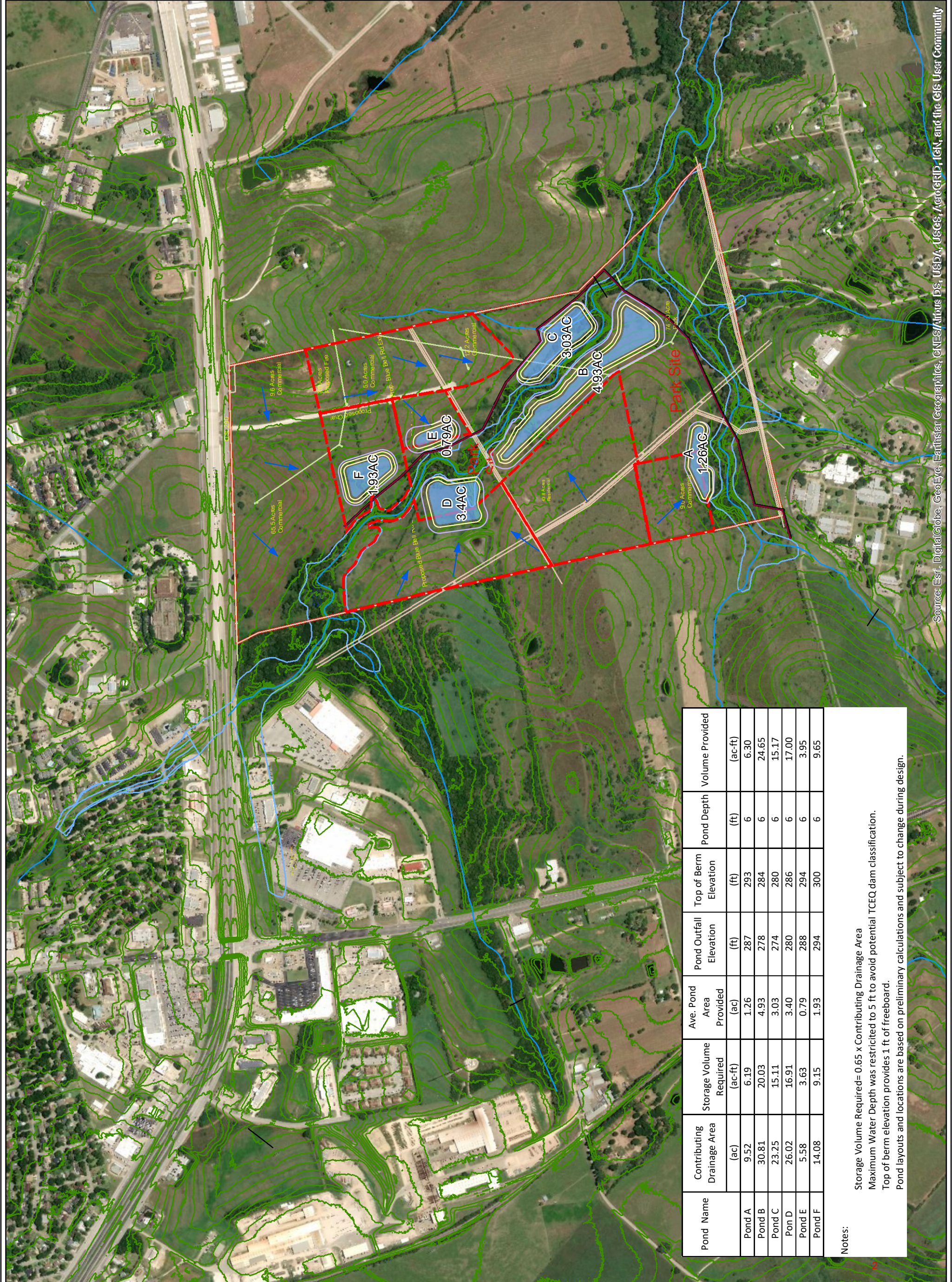
- LEGEND**
- Proposed Sewer
 - Limits of Grading
 - Top of Berm
 - Pond Water Level
 - Ponds Drainage Areas
 - Creek CL
 - 100-yr Floodplain
 - TNRRIS 2011-5ft Contours

**KRUSE TRACT
PRELIMINARY
DETENTION POND
LAYOUT 1**

BRENHAM
WASHINGTON COUNTY, TEXAS



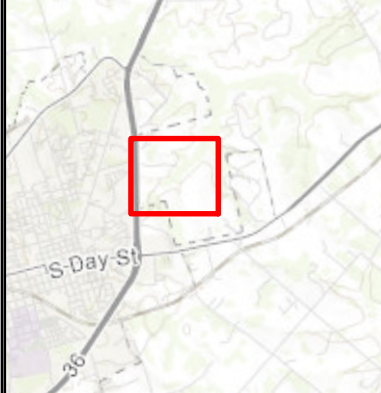
Disclaimer: This product is offered for informational purposes and may not have been prepared for or be suitable for legal, engineering, or surveying purposes. It does not represent an on-the-ground survey and represents only the approximate relative location of property, governmental and/or political boundaries or related facilities to said boundary. No express warranties are made by Jones & Carter, Inc. concerning the accuracy, completeness, reliability, or usability of the information included within this exhibit.



Pond Name	Contributing Drainage Area (ac)	Storage Volume Required (ac-ft)	Ave. Pond Area Provided (ac)	Pond Outfall Elevation (ft)	Top of Berm Elevation (ft)	Pond Depth (ft)	Volume Provided (ac-ft)	
							(ac-ft)	(ac-ft)
Pond A	9.52	6.19	1.26	287	293	6	6.30	
Pond B	30.81	20.03	4.93	278	284	6	24.65	
Pond C	23.25	15.11	3.03	274	280	6	15.17	
Pond D	26.02	16.91	3.40	280	286	6	17.00	
Pond E	5.58	3.63	0.79	288	294	6	3.95	
Pond F	14.08	9.15	1.93	294	300	6	9.65	

Notes:

- Storage Volume Required= 0.65 x Contributing Drainage Area
- Maximum Water Depth was restricted to 5 ft to avoid potential TCEQ dam classification.
- Top of berm elevation provides 1 ft of freeboard.
- Pond layouts and locations are based on preliminary calculations and subject to change during design.



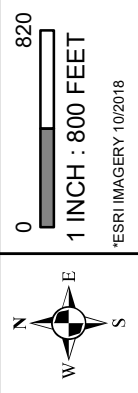
VICINITY MAP

1 INCH = 2 MILES

- LEGEND**
- █ Pond Water Level
 - Limits of Grading
 - Top of Berm
 - Proposed Sewer
 - █ Ponds Drainage Areas
 - Creek CL
 - 100-yr Floodplain
 - TNRIS 2011-5ft Contours

KRUSE TRACT PRELIMINARY DETENTION POND LAYOUT 1

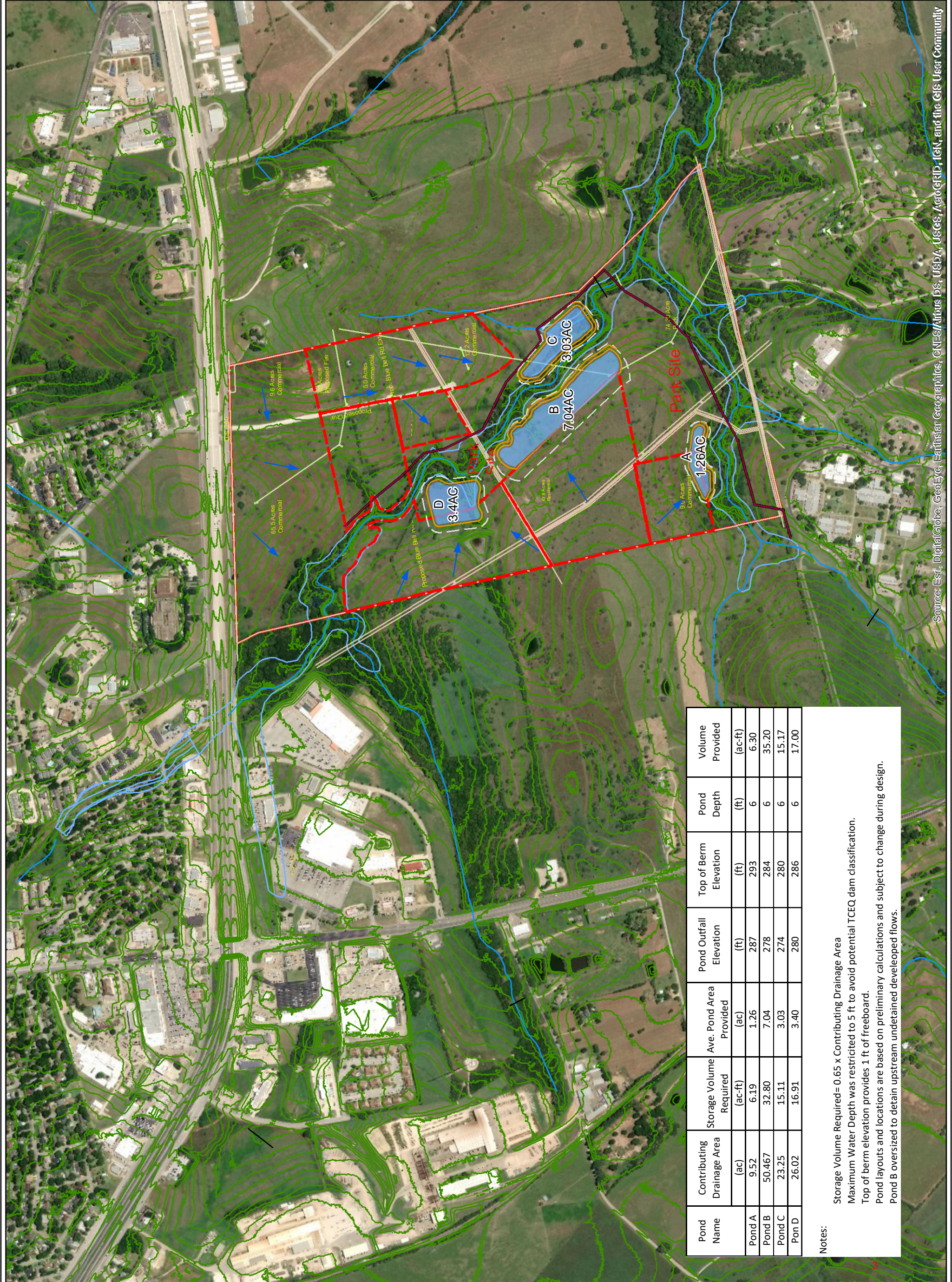
BRENHAM
WASHINGTON COUNTY, TEXAS



Disclaimer: This product is offered for informational purposes and may not have been prepared for or be suitable for legal, engineering, or surveying purposes. It does not represent an on-the-ground survey and represents only the approximate relative location of property, governmental and/or political boundaries or related facilities to said boundary. No express warranties are made by Jones & Carter, Inc. concerning the accuracy, completeness, reliability, or usability of the information included within this exhibit.



JONES CARTER
Texas Board of Professional Engineers Registration No. E-439



Pond Name	Contributing Drainage Area (ac)	Storage Volume Required (ac-ft)	Ave. Pond Area Provided (ac)	Pond Outfall Elevation (ft)	Top of Berm Elevation (ft)	Pond Depth (ft)	Volume Provided (ac-ft)
Pond A	9.52	6.19	1.26	287	293	6	6.30
Pond B	50.467	32.80	7.04	278	284	6	35.20
Pond C	23.25	15.11	3.03	274	280	6	15.17
Pond D	26.02	16.91	3.40	280	286	6	17.00

Notes:

- Storage Volume Required = 0.65 x Contributing Drainage Area
- Maximum Water Depth was restricted to 5 ft to avoid potential TCEQ dam classification.
- Top of berm elevation provides 1 ft of freeboard.
- Pond layouts and locations are based on preliminary calculations and subject to change during design.
- Pond B oversized to detain upstream undetained developed flows.

Future Commercial

Proposed Blue Bell Road Ext

POINTS OF INTEREST

- 1 Rest Areas
- 2 Restrooms
- 3 Playscape
- 4 Picnic Area
- 5 Parking Area
- 6 Multi Purpose Field
- 7 Viewing Pull-off
- 8 Overlook
- 9 Community Center
- 10 Wildflower Area
- 11 Boardwalk/Canoe Launch

Future Residential

Proposed Chappell Hill St Ext

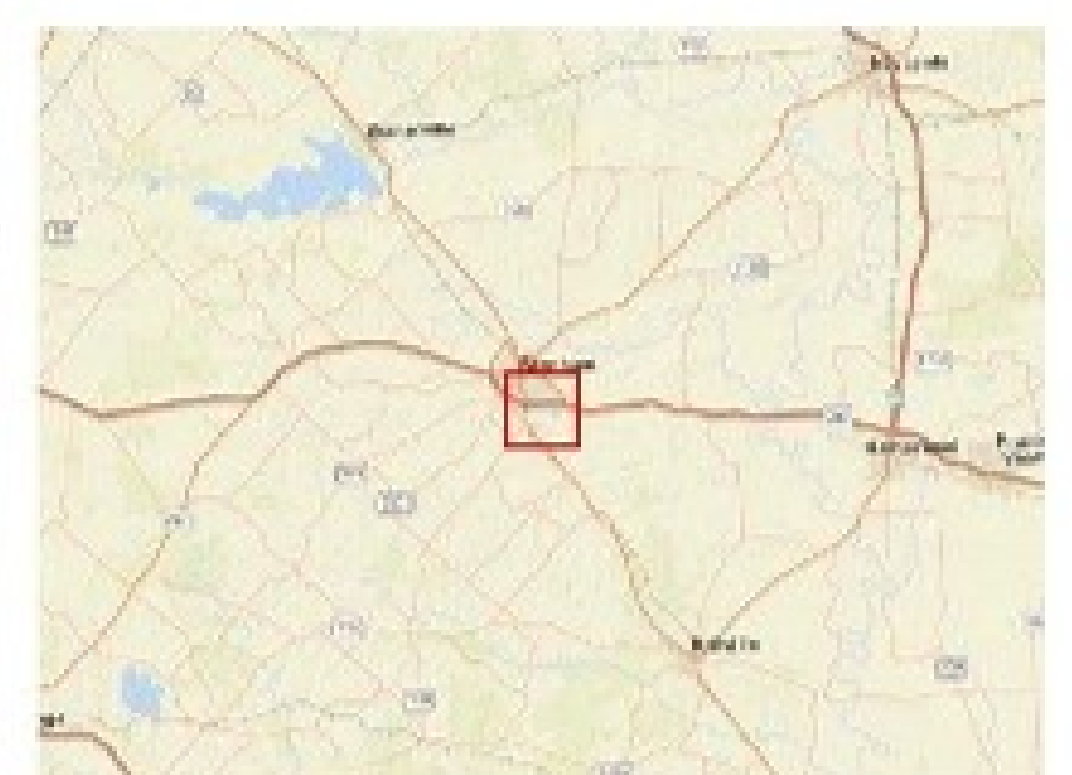
DRAFT



1 inch equals 100 feet

BRENHAM FAMILY PARK PLAN
WASHINGTON COUNTY, TEXAS

LEGEND					
Proposed Park Sites	Proposed Park Access Road	Trail	Maintained Surface Trail	Approx. Special Flood Hazard Area	Multi-Purpose Field Areas
Proposed Lake	Proposed Roads	Play Area	Parking Areas	Multi-Purpose Field Areas	Multi-Purpose Field Areas
Rest Area	Picnic Area	Restroom	Community Center	Viewing Pull-off	
Wild Flower Field	Boardwalk/Canoe Launch				



VICINITY MAP
Scale: 1 inch equals 10 miles

Future Commercial

Proposed Blue Bell Road Ext

POINTS OF INTEREST

- 1 Rest Areas
- 2 Restrooms
- 3 Playscape
- 4 Picnic Area
- 5 Parking Area
- 6 Multi Purpose Field
- 7 Community Center
- 8 Wildflower Area
- 9 Boardwalk/Canoe Launch

Future Residential

Proposed Chappell Hill St Ext

DRAFT



1 inch equals 100 feet

BRENHAM FAMILY PARK PLAN
WASHINGTON COUNTY, TEXAS

Disclaimer: This product is offered for informational purposes and may not have been prepared for or be suitable for legal, engineering, or surveying purposes. It does not represent an on-the-ground survey and represents only the approximate relative location of property, governmental and/or political boundaries or related facilities to said boundary. No express warranties are made by Jones & Carter, Inc. concerning the accuracy, completeness, reliability, or usability of the information included within this exhibit.



LEGEND				
Proposed Park Sites	Proposed Park Access Road	Trail	Maintained Surface Trail	Approx. Special Flood Hazard Area
Proposed Lake	Proposed Roads	Play Area	Parking Areas	Multi-Purpose Field Areas
Rest Area	Picnic Area	Restroom	Community Center	Viewing Pull-off
Wild Flower Field	Boardwalk/Canoe Launch			



VICINITY MAP
Scale: 1 inch equals 10 miles