

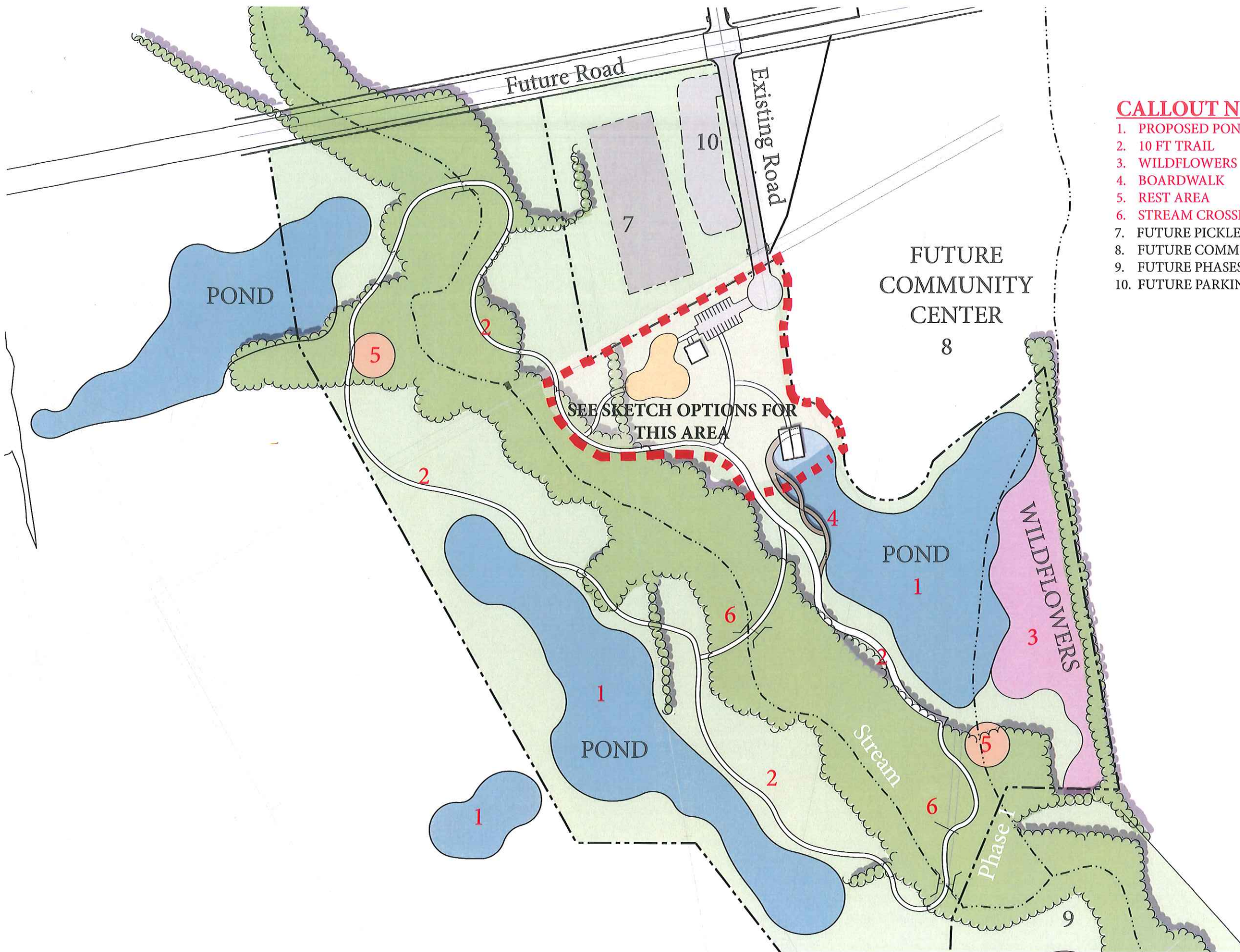
- Future Land Use Plan**
FLU_FINAL
- Rural
 - Open Space
 - Park
 - Estate Residential
 - Single Family Residential
 - Manufactured Homes
 - Multi-Family Residential

- Mixed Use Blinn Adjacent
- Mixed Use Downtown Adjacent
- Corridor Mixed Use
- Planned Development
- Downtown
- Local Public Facilities
- Commercial
- Industrial
- City Limits

- Layer**
- TxDOT Principal Arterial
 - TxDOT Minor Arterial
 - City Arterial
 - Proposed City Arterial (105-ft ROW)
 - City Collector
 - Proposed City Collector (80-ft ROW)
 - Other TxDOT Major/Minor Collector

1 inch = 1,042 feet





CALLOUT NOTES

- 1. PROPOSED POND
- 2. 10 FT TRAIL
- 3. WILDFLOWERS
- 4. BOARDWALK
- 5. REST AREA
- 6. STREAM CROSSING
- 7. FUTURE PICKLEBALL FACILITY
- 8. FUTURE COMMUNITY CENTER
- 9. FUTURE PHASES
- 10. FUTURE PARKING



- 1. REST AREA
- 2. PARKING
- 3. PLAYGROUND
- 4. REST-ROOM
- 5. OFF-ROAD VEHICAL TRAIL



- 6. MULTI-USE TRAIL
- 7. PERCHED LAKE

DATE: 11-11-2010
SCALE: 1" = 200'
JONES / CARTER

